



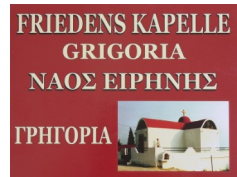
[www.friedenskapelle-kreta.de](http://www.friedenskapelle-kreta.de)



The 'Peace Chapel' is located at Grigoria on Crete at the southern slopes of the Ida Mountains. Street signs from Festos, Vori and Kamares show you the way. Ask the friendly people of Grigoria village for the chapel and for family Angelidakis, tel +30 6938 771 222, who has the key.

*Our association is pleased with every visit to the 'Peace Chapel' and every contribution to its maintenance would be appreciated.*

*To find out more,  
please visit our  
homepage  
[www.friedenskapelle-kreta.de](http://www.friedenskapelle-kreta.de)*



Contact:  
Verein zur Errichtung und Erhalt einer  
FRIEDENSKAPELLE auf Kreta als  
Mahnmal für die im 2. Weltkrieg  
stattgefundenen Ereignisse e.V.,  
Michael Kerber, Berliner Straße 38,  
35444 Biebertal, +49 6409 1868

Banc account:  
„Verein Friedenskapelle Kreta e.V.“  
IBAN DE 76 512 500 00 00 120 888 50  
SWIFT-BIC HELADEF1TSK



## The 'Peace Chapel' on Crete



The pictures in the 'Peace Chapel' may reveal that by trust on the christian belief in the sacrifice of Jesus and his resurrection all human suffering can eventually find comfort.



From the theme of this chapel for every people exposed to violence in innumerable acts of war and persecution consolation and hope should arise and we are reminded:

*„ .. may peace  
prevail all  
over the  
world !“*

*A Memorial to Peace  
at Grigoria on Crete*





## The "Peace Chapel" on Crete

[www.friedenskapelle-kreta.de](http://www.friedenskapelle-kreta.de)

The German artist-couple Hilde and Albert Kerber donated in 1992 this memorial chapel to which they gave the name 'Peace Chapel'. It is in memory of events that occurred in the Second World War.



The chapel was built in the mountain village Grigoria in the south of Crete. It contains wall-sized oil paintings created by both artists in several years of joint painting.



To design this memorial to peace between nations and among people, both artists searched for universal representations of suffering, comfort and confidence. The paintings on the two sidewalls of the interior represent human tragedies.

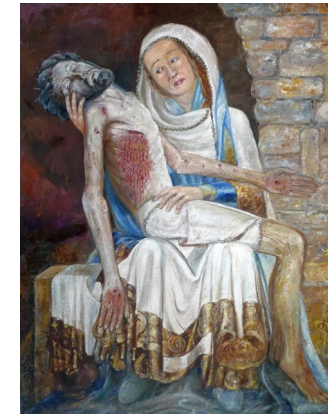


- A group of women and children fleeing from their homes. As it happens even nowadays every passing day.



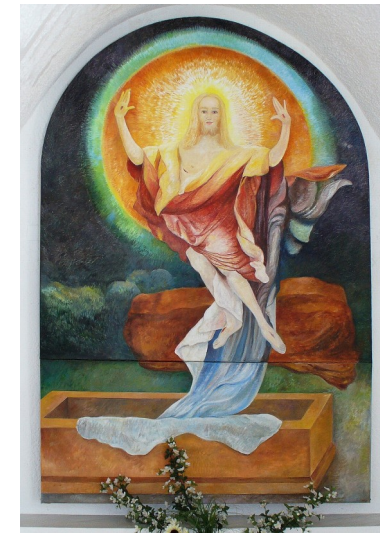
- Six women bearing a dead young man to his grave.

The paintings in the center and in the apse of the building with cruciform ground plan point to the Christian faith-confidence that through Christ's suffering, death and resurrection the way to peace and love among men is still possible.



Suffering and deep pain are vividly inspired by the Pietà of Wetzlar Cathedral, Germany.

The transformation of this sculpture into a painting by the artist couple was placed centrally in the crossing of the 'Peace Chapel'.



The belief in the resurrection of Christ provides comfort and confidence and helps to overcome the sufferings and earthly boundaries.

This belief can be felt in the artists' personal interpretation of the painting 'The Resurrection' by Matthias Grünewald from the Isenheim Altar in the apse of the 'Peace Chapel'.